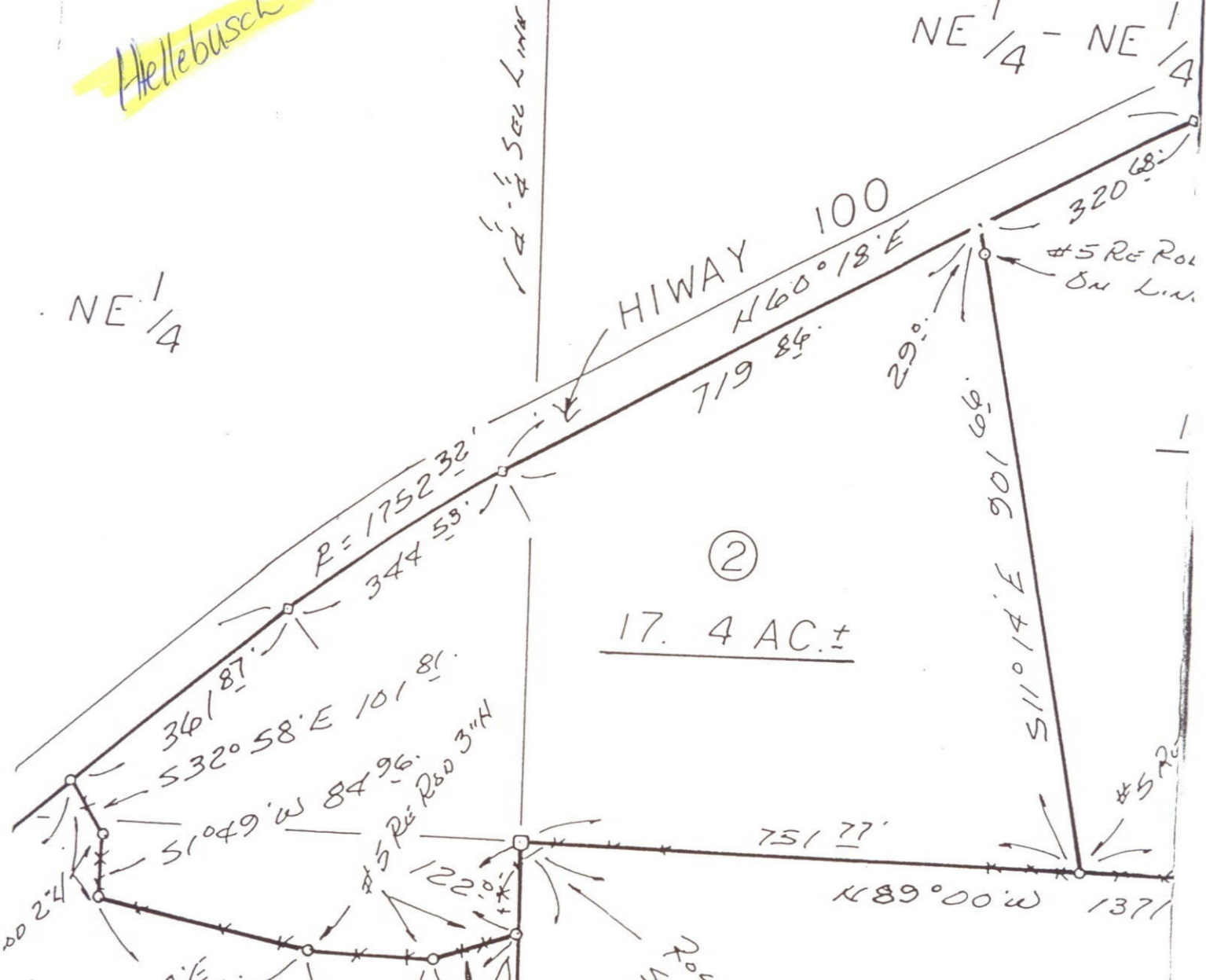


Hellebusch

NE 1/4 - NE 1/4

NE 1/4

1/4 Sec Line



②

17.4 AC.±

I, THOMAS J. KUSTER, MISSOURI REGISTERED LAND SURVEYOR NO. 1910, HEREBY CERTIFY THAT THE SURVEY SHOWN ON THIS PLAT WAS MADE BY ME IN THE MONTH OF FEBRUARY, 2003 AND THE RESULT OF SAID SURVEY ARE SHOWN ON THIS PLAT TO THE BEST OF MY KNOWLEDGE AND BELIEF.

DATE FEBRUARY 16, 2003

SIGNED *Thomas J. Kuster*
 THOMAS J. KUSTER, RLS 1910

Mo. Land Survey
 Monument (FOUND)
 6" N.

THOMAS J. KUSTER & ASSOC.	
LAND SURVEYORS BOX 785 LINN, MO.	
SCALE: 1" = 200'	APPROVED BY:
DATE: FEB 16, 2003	DRAWN BY: T. KUSTER
REVISOR:	
SURVEY FOR JUDY WARDEN R.E.	
S20-T45N-R5W-5PM	DRAWING NUMBER: 03-08

A
 77°
 30 3/4'