

MLS# 10032455

\$160,000

Steve	132 E. 11 <sup>th</sup> St-Hermann				Gasconade	\$165,000
Agent	Location (Nearest Town)	Sec	Twp	Range	County	Price

## Judy Warden Real Estate, Inc.

234 East Second St., Hermann, MO 65041

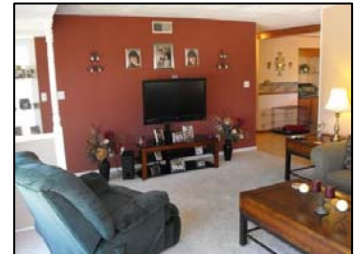
Phone: 573-486-3127 Fax: 573-486-3521 Email: [judywardenre@ktis.net](mailto:judywardenre@ktis.net) Web: [www.judywarden.com](http://www.judywarden.com)

**Specializing in Rural Properties**



Lot Size	120x120	House	Ranch	Fireplace	NA
Fences	Yes	Age	Approx. 1964	Stove	NA
Road Frontage	East 11 <sup>th</sup> St	Construction	Vinyl	Dishwasher	Yes
Storage Bldg.	NA	Sq. Ft. Living	Approx. 2800'	Refrigerator	NA
Garage	2 Car Tuck Under	Type Heat	Nat. Gas F/A	Drapes/Curtains	Some
Signs	Yes	Roof	Comp/Shingle	Floor Covering	Carpet/Vinyl
School District	Hermann	Baths	2 Main	Basement	Full/Partial Finished/WOut
Taxes (2009)	\$1200.05	Living Room	X	Porches	Front
Possession	Closing	Dining Room	X	Deck	NA
Electric	City	Kitchen	X	Patio	Back
Gas	City	Family Room	LL	Septic System	City
		Bedroom	4 Main/1 LL	Water	City
		Utility Room	LL	Air Condition	C/A
<b>CARPORT</b>		<b>MANY NEW UPDATES – MOVE IN READY</b>		<b>LARGE TREES IN BACK PROVIDE LOTS OF SHADE</b>	
<b>LARGE REC ROOM</b>		<b>DOUBLE LOT</b>			
		<b>FENCED IN BACK YARD</b>		<b>QUIET STREET</b>	

Information herein is not warranted and subject to change without notice. We assume no liability for errors.



**BEAUTIFUL FAMILY HOME**